



VIASSIST

***PostgreSQL ODBC
Driver Installation Guide for
VIAssist***

July 14, 2011

Introduction

This document contains the installation and setup instructions for the PostgreSQL ODBC driver. It is required that this driver be installed and appropriately configured in order to use VIAssist with such a database.

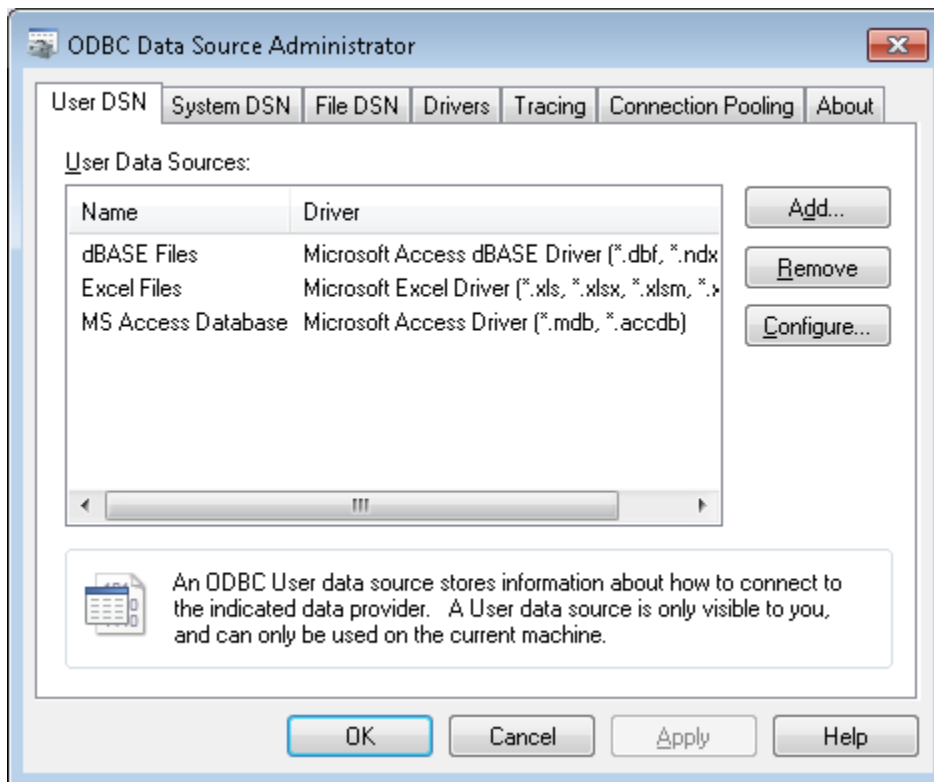
Steps to Install

1. Locate the PostgreSQL ODBC database driver installers. The latest versions, at time of deployment, are supplied in the PostgreSQLDrivers folder of the VIAssist Installation media.
2. Launch the appropriate installation wizard listed below and run through it to set up the ODBC driver:
 - a. `psqlodbc.msi`: PostgreSQL ODBC Drivers for 32-bit VIAssist Installations
 - b. `psqlodbc_x64.msi`: PostgreSQL ODBC Drivers for 64-bit VIAssist Installations

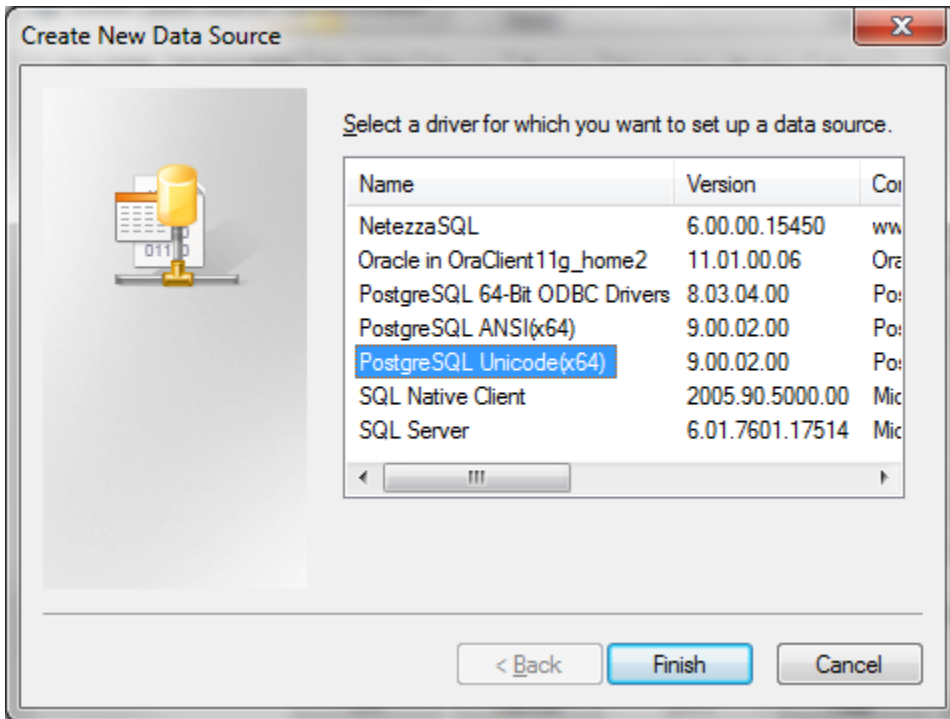
Steps to Configure ODBC

1. Open the ODBC Data Source Administrator. This can be found within the Windows Control Panel, within Administrative Tools.

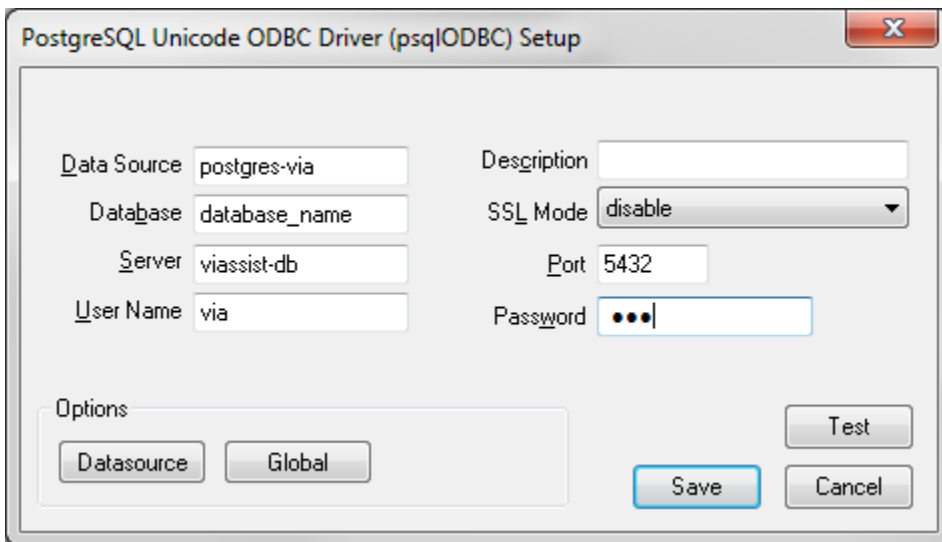
2. Click "Add..." within the ODBC Data Source Administrator window.



3. Select the “PostgreSQL Unicode” driver and click “Finish.” Please be sure to use the x86 version for 32-bit VIAssist installations, and the x64 version for 64-bit VIAssist installations.

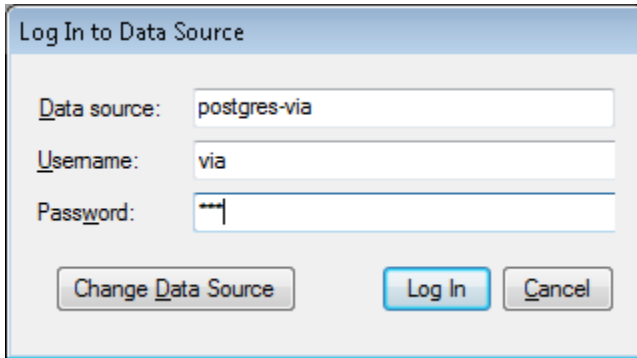


4. Fill in the form with the appropriate connection details, making note of the name you enter into the “Data Source” box:



5. Optionally, click the “Test” button to verify the connection details are correct. If all is well, you will receive a “Connection Successful” message, otherwise, you will receive an error message outlining any problems with the connection details.
6. Press “Save” to save the DSN.

7. When logging into VIAssist, enter the DSN you created earlier, along with a valid username and password:



The screenshot shows a dialog box titled "Log In to Data Source". It contains three text input fields. The first field is labeled "Data source:" and contains the text "postgres-via". The second field is labeled "Username:" and contains the text "via". The third field is labeled "Password:" and contains masked characters. Below the input fields are three buttons: "Change Data Source", "Log In", and "Cancel".

8. Repeat these installation and setup directions on all machines connecting to the PostgreSQL database.